

Leading Roles[®]

› People › Performance › Partners

Expert Health Trainer

Cairns



Connect 'n' Grow[®]

REDESIGNING EDUCATIONAL PATHWAYS
RTO 40518



CANDIDATE
INFORMATION

LeadingRoles.com.au

Table of Contents

Message from the CEO.....	3
The Role	4
Connect 'n' Grow [®] : Background.....	5
Recruitment Process	5
Recruitment Process Timeframes.....	7
Contact.....	8
Attachment 1: Organisational Structure	
Attachment 2: Position Description	

Message from the CEO

At Connect 'n' Grow[®] we are well underway in building a job ready health and community service workforce throughout Australia. Our initial focus has been building 'grow your own' models throughout Queensland and the Northern Territory. I firmly believe that people with education can overcome the greatest of adversities.

In 2012, my wife and I founded Connect 'n' Grow[®] to help Australia's First People. With our education and health backgrounds, we decided to improve the health and wellbeing of Aboriginal and Torres Strait Islander people.

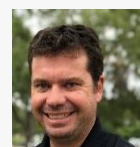
We have an extremely dedicated team working to bring quality health education. Our company is a Registered Training Organisation (RTO) that aims to spearhead change. Our Qualifications, Skill-Sets, and Short Courses (NanoQuals) are designed to increase the desirability of our students as employees. At our core, however, we will always have a special place for those who really need our help.

In recent years, keeping in mind the predicted shortage of healthcare professionals and depleting reputation of RTOs, we realised our need to go beyond. Connect 'n' Grow[®] have now expanded to mainstream schools, businesses, and individuals - giving every person who aspires to have a successful career in health and social service an opportunity.

Our people are at the center of all our operations and systems. Collectively, our team of experts are responsible for unlocking the true potential of students. We think outside-the-box to provide the best solutions possible.

The diverse working environment we operate in reflects our tribe. We are dedicated to building an efficient health and community service workforce. This is why our team has experts in multiple fields and industries.

If this sounds like a movement you would be interested in joining, we look forward to receiving your application for this position.



Michael Gleadow
Chief Executive Officer

The Role

Connect 'n' Grow is a Registered Training Organisation that delivers high quality health and community services training to school students, businesses, and individuals.

The vision of the organisation is to unlock the true potential of learners by building a job-ready health and social services workforce through training and education.

The Expert Health Trainer plays an important role in the support and delivery of training courses in health and community services, primarily within schools, but also within hospitals and community settings.

Background information

- Expert health trainers work closely with teachers who deliver the training (usually HPE or Biology teachers) within the schools.
- The expert health trainer provides support through mentoring, practical health assessments, clinical and practical support.
- Expert health trainers provide support through face-to-face visits, emails and video conferencing.
- They also deliver training programs outside of the school-based programs, including hospital environments.
- Expert Health Trainers typically visit the schools once each semester.
- Connect 'n' Grow is currently working with schools, primarily in Cairns, Townsville, Mackay, Sunshine Coast, Brisbane, Ipswich, Toowoomba and surrounding region.

Responsibilities

- Support the delivery of courses for Certificate II and III qualifications, short courses and skill sets.

- Trainer support for teachers within schools delivering the programs. Support the development of content for training courses.
- Regular review of Connect 'n' Grow training programs with partner schools or organisations.

Opportunities and Challenges

- This is highly rewarding work supporting the career pathways of young people.
- Join an organisation that is growing and expanding interstate and into international markets.
- The Expert Health Trainer team is also growing which may lead to career development opportunities over time.
- This can be a busy role so strong organisational skills are required.

Qualifications, skills and attributes

- Current Registered Nurse (essential)
- Certificate IV Training and Assessment - TAE 40116 or 40110 (desirable, but not essential)
- Experience delivering clinical education
- Experience working in a fast-paced, high pressure environment
- Passionate about the difference education, specifically health education can make in the world
- Experience delivering projects ahead of time
- Technology management
- Strong written and verbal communication skills
- Warm and personable nature.



Connect 'n' Grow[®]: Background

Connect 'n' Grow[®] is a registered training organisation (RTO) that delivers high quality health and community services training to school students, businesses, and individuals.

The vision of the organisation is to unlock the true potential of learners by building a job-ready health and social services workforce through training and education.

In 2012, Michael Gleadow and Dr. Naomi Gleadow founded Connect 'n' Grow[®] to help Australia's First People. With their education and health backgrounds, the couple decided

to improve the health and wellbeing of Aboriginal and Torres Strait Islander people.

In recent years, keeping in mind the predicted shortage of healthcare professionals and depleting reputation of RTOs, they realised their need to go beyond.

Connect 'n' Grow[®] have expanded to mainstream schools, businesses, and individuals—giving every person that aspires to have a successful career in health and social service an opportunity.



Vision

We unlock the true potential in our learners through education.



Mission

We are building a job ready health and social services workforce through optimising training and education opportunities for every individual.

Our Values

WE MAKE IT SIMPLE

Everything we do, we ensure that our partners feel no burden at all. We find ways to adopt the most efficient and simplistic methods for training and education.

WE EMBRACE OUR SYSTEMS

Our staff, learners and partners are motivated to embrace the latest systems and technologies. We are currently adopting innovative IT systems including Virtual Reality to deliver programs and run internal systems.

WE COMMIT TO GROWTH

And we mean growth for both ourselves and our partners. As we constantly better ourselves, we hope to grow both personally and professionally.

WE CARE ABOUT OUR RELATIONSHIPS

Every decision we make is another step toward fortifying our relationships. We maintain meaningful relationships with our partners even after they have completed their training.

WE FIND SATISFACTION IN OUR WORK

We feel a sense of achievement when we see our partners succeed. One of our most important goals is to ensure that our partners find satisfaction in our training programs.

WE MAKE STUDENT CENTRIC DECISIONS

We believe that by placing the students' best interests at the centre of our decision making, and understanding what impact these have on students, our programs will always deliver them the best possible outcomes.

Recruitment Process

How to Apply

Please submit your application via the [Leading Roles website](#).

Please upload:

- Your CV
- A covering letter addressing the criteria below:

Shortlist Criteria

- ▶ **Shortlist Criteria 1** Current Registered Nurse (essential)
- ▶ **Shortlist Criteria 2** Certificate IV Training and Assessment - TAE 40116 or 40110 (desirable but not essential).
- ▶ **Shortlist Criteria 3** Experience delivering clinical education.
- ▶ **Shortlist Criteria 4** Experience working in a fast-paced, high pressure environment.
- ▶ **Shortlist Criteria 5** Passionate about the difference education, specifically health education can make in the world.
- ▶ **Shortlist Criteria 6** Experience delivering projects ahead of time.
- ▶ **Shortlist Criteria 7** Technology management.
- ▶ **Shortlist Criteria 8** Strong written and verbal communication skills.

Recruitment Process Timeframes

Application Period:	Monday 21 June – Monday 12 July 2021
Closing date for Applications:	5pm Monday 12 July 2021
Initial Assessment:	Week commencing Monday 12 July 2021
Connect 'n' Grow [®] Interviews:	Week commencing Monday 19 July 2021

**Note these timeframes are indicative only and may change subject to the outcomes of the recruitment process, Connect 'n' Grow[®] staff and candidate availability.*

Application Assessment, Shortlisting and Connect 'n' Grow[®] Interviews

Leading Roles and Connect 'n' Grow[®] will determine a shortlist of suitable candidates, and will arrange interviews with the interview panel, depending on candidate and Connect 'n' Grow[®] staff availability.

Connect 'n' Grow[®] may require their preferred candidates to undergo psychometric assessment to assist in understanding the candidate's fit for the role and organisation, working preferences and attributes. Following selection of a preferred candidate Connect 'n' Grow[®] may require a number of further checks including reference checks, criminal history checks and medical assessments.

You must be an Australian Citizen or hold the appropriate visa to work in Australia to apply for this role. Leading Roles will undertake checks to confirm your right to work in Australia at offer stage.

Privacy Information: Leading Roles is collecting your personal information in accordance with the Information Privacy Act for the purpose of assessing your skills and experience against the position requirements. The information you provide in your application will only be used by employees of Leading Roles. Your information will be provided to authorised staff at Connect 'n' Grow[®], including Human Resources and the relevant selection panel members. But it will not be given to any other person or agency unless you have given us permission, or we are required by law.

Contact



Belinda Walker

Executive Recruitment Consultant
Leading Roles

M: 0411 449 447

E: belinda.walker@leadingroles.com.au

www.leadingroles.com.au

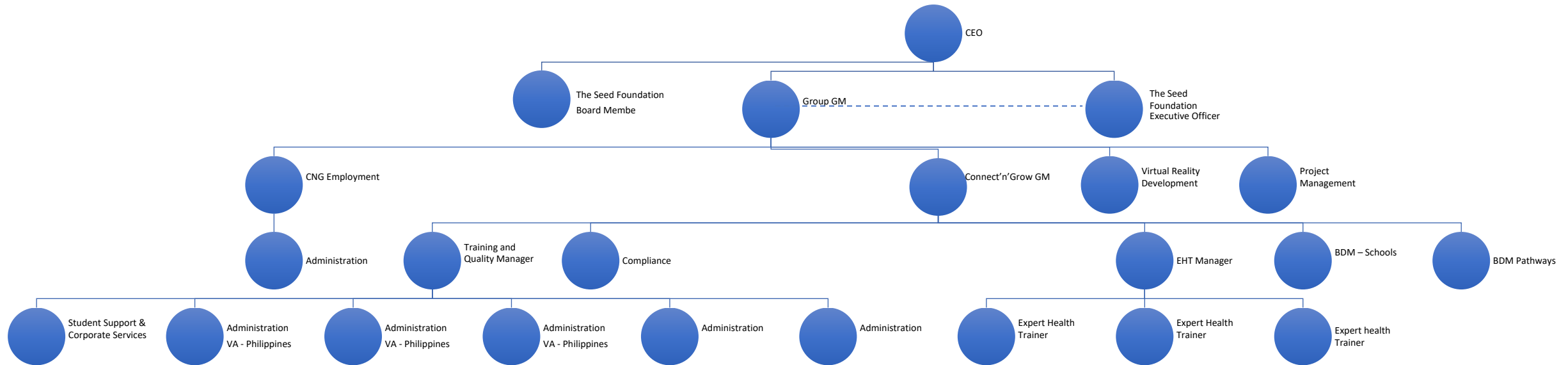
ABN: 53 142 460 357



Connect 'n' Grow[®]

REDESIGNING EDUCATIONAL PATHWAYS

RTO 40518





RTO 40518

Connect 'n' Grow

REDESIGNING EDUCATIONAL PATHWAYS

POSITION CONTRACT	
Position Title	Expert Health Trainer
Location:	Cairns
Employment Status	Full Time
Reports to:	Expert Health Trainer Manager
Date last reviewed	March 2021

ABOUT CONNECT 'N' GROW
Connect 'n' Grow is a Registered Training Organisation delivering high-quality health and community services training services within schools by entering into a partnership to deliver the training on its behalf.
Our Vision We unlock the true potential in our learners through education
Our Mission We are building a job ready health and social services workforce through optimising training and education opportunities for every individual.

POSITION OVERVIEW

Expert Health Trainer plays a vital role in the support, program delivery and quality of training undertaken by all partners. This role will be able to lead the following:

- Expert delivery provided for qualifications, short courses & skill sets
- Trainer support for all Connect 'n' Grow teachers delivering our programs
- Content development for qualifications, short courses and skill sets
- Ongoing systematic reviews of all Connect 'n' Grow training programs

REVIEW FREQUENCY

- Monthly vitals with National Operations - Product Development & Delivery
- Annual performance review

KEY RESPONSIBILITIES

- Ensure a high standard of health and community service training is occurring with all Connect 'n' Grow partners
- Ensure all teachers are adequately upskilled to deliver the Program within their schools. Provide gap training to enable all teachers are up to a high standard
 - Visit schools each term to ensure they are delivering a quality program to their students. Complete the quality checklist during each visit
- Provide feedback to the Product Development and Delivery team around on-going quality in each school
- Deliver training to Connect 'n' Grow students enrolled in any of the following:
 - Qualifications
 - Skill Sets
- Be involved in the development of the following including trainers manuals, assessment and learning resources;
 - Qualifications
 - Skill Sets
 - Short Courses
- Assist in finding work placements for teachers that are delivering the qualifications within their schools
- Ensure all Connect 'n' Grow training products are at a high industry standard

KEY PERFORMANCE INDICATORS

Key performance indicators for this role include:

- High standard of delivery is occurring within each of our partner schools
- Schools are being visited each term and information is fed back the Product Development and Delivery team and acted upon
- All Connect 'n' Grow training and assessment products meet the high standard of the industry

- Overall team performance and happiness of our teachers

COMPETENCIES, KNOWLEDGE & EXPERIENCE

Above all, you are passionate about the difference that education, specifically health education, can make to the world. In addition to this, you have extensive experience in:

- Meeting key performance metrics
- Deliver on results and projects ahead of deadlines
- Raise the standard of health training at Connect 'n' Grow
- Working in a fast-paced, high-pressure environment
- Making sound business decisions based on equal parts data, facts and intuition
- Technology management
- Health education

GENERAL

- Maintain a positive approach to business using appropriate conduct and a responsible and professional manner consistent with the standards expected by Connect 'n' Grow and its clients at all times. This also includes maintaining a professional and business-like standard of personal presentation.
- Connect 'n' Grow is an Equal Employment Opportunity Employer and is committed to ensuring a workplace free of discrimination and harassment. This commitment is based on the need to ensure our company complies with Equal Opportunity laws. Ensuring that discrimination and harassment do not occur in the workplace is the responsibility of all employees.
- The responsibility of Occupational Health and Safety in the workplace lies with all employees. This includes conducting yourself in a safe manner and not putting yourself and others at risk, as well as complying with the company's requirements in relation to OH&S. All employees also have a duty to ensure that additional company policies are observed and practised.
- Follow/adhere to all lawful and reasonable instructions and requests as directed by your CEO. This includes upholding policies and procedures set by Connect 'n' Grow.

This exciting opportunity will enable the right candidate to grow and develop in a fast pace environment, accelerating the fast growth of Connect 'n' Grow and her/his personal growth and success.

At Connect 'n' Grow, you will display a daily commitment to upholding and driving the following principles within the Connect 'n' Grow team. These values are something that we absolutely live by.

You will continually display and champion our Values on a daily basis in all areas of influence:

1. We make it **Simple**

2. We embrace our **Systems**
3. We commit to **Growth**
4. We care about our **Relationships**
5. We find **Satisfaction** in our work
6. We make Student Centric Decisions

Please sign as confirmation that you have read and understand the above detailed Position Description:

Name: _____

Date: _____

Signature: _____